

BELT OIL SKIMMER MIGHTY MINI

As this smallest of the belt skimmers has a rigid stabilizer bar it is portable and thus it is suitable for both stationary and mobile use. There are four different belt lengths and two belt widths. All units are made of stainless steel and come with an integrated timer.

The skimmer belts are available in either polymer or stainless steel (optional in elastomer).

Type	Belt Width	Belt Length [L]	Capacity
SMMS1-06 (MM100ST-06)	25 mm (1")	152 mm (6")	~ 3,5 l/h
SMMS1-12 (MM100ST-12)	25 mm (1")	305 mm (12")	~ 3,5 l/h
SMMS1-18 (MM100ST-18)	25 mm (1")	457 mm (18")	~ 3,5 l/h
SMMS1-24 (MM100ST-24)	25 mm (1")	610 mm (24")	~ 3,5 l/h
SMMS2-06 (MM200S2-06)	50 mm (2")	152 mm (6")	~ 7 l/h
SMMS2-12 (MM200S2-12)	50 mm (2")	305 mm (12")	~ 7 l/h
SMMS2-18 (MM200S2-18)	50 mm (2")	457 mm (18")	~ 7 l/h
SMMS2-24 (MM200S2-24)	50 mm (2")	610 mm (24")	~ 7 l/h

Type codes in brackets are older type codes. The performance data listed are non-binding guidelines based on standard oil SAE 30.



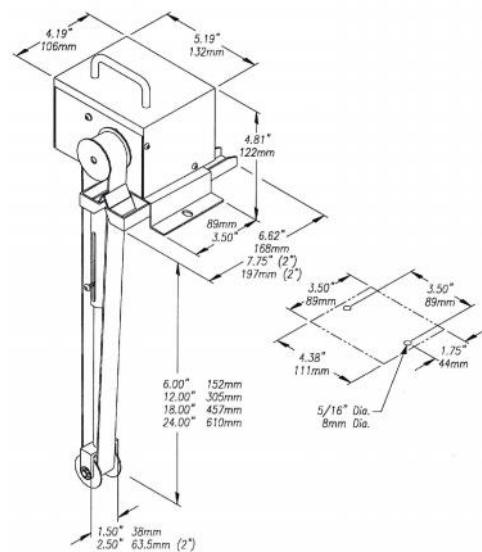
Belt Oil Skimmer SMMS1-18

Technical Data

Drive	Gearmotor 30 rpm, fan cooled
Voltage	1~ 230 V, 50 Hz (optional 115 V, 60Hz)
Current consumption	1,5 – 2 A
Power cord	3-pole, 1 m, with plug
Timer	Day timer 24 h (optional weekly timer)
Material	Base unit of stainless steel 316 Wiper blades of Nylon (optional stainless steel) Tail pulley of PVDF
Weight	approx. 3,5 kg

Accessories

Mounting bracket OMMST100	The universal mounting bracket clamps easily to vertical tank or horizontal flanged surface to provide fast, secure installation of skimmer.
Oil concentrator ODM100	The oil concentrator can be adapted directly to the skimmer and provides additional oil/water separation. The oil-free coolant discharges from the decanter is returned to the tank.



The belt length [L] is the measure from the mounting level of the skimmer to the lowest edge of the tail pulley. You can choose between either 152 mm (6"), 305 mm (12"), 457 mm (18") or 610 mm (24").



Oil concentrator ODM100

Mounting bracket OMMST100